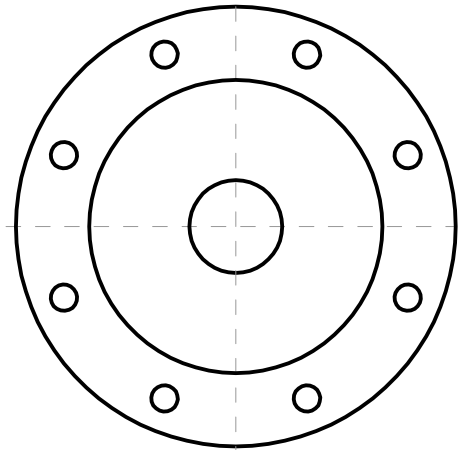
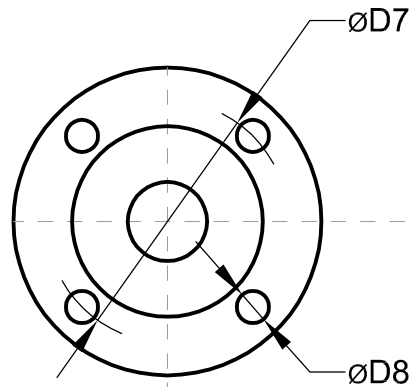
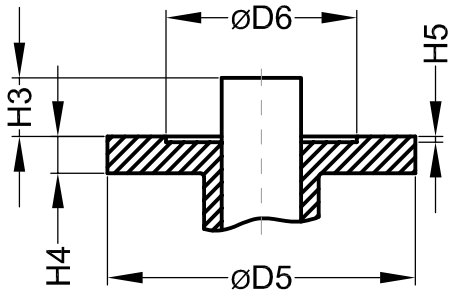


# Размеры присоединительного фланца

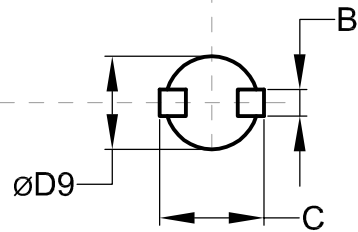
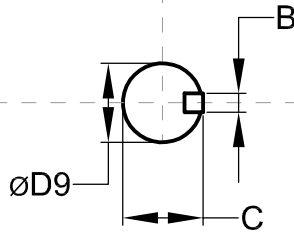
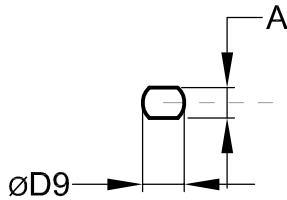
Dn 40-600

Dn 700-1200



Dn 40-250

Dn 300-600



Габаритные и присоединительные размеры, [мм]

DN	ISO 5210	D5	D6	D7	D8	D9	A	B	C	H3	H4	H5
40	F05	65	35	50	8	12.60	8.86			31	12	4
50	F05	65	35	50	8	12.60	8.86			31	12	4
65	F05	65	35	50	8	12.60	8.86			31	12	4
80	F05	65	35	50	8	12.60	8.86			31	12	4
100	F07	90	55	70	10	15.77	11.10			31	15	4
125	F07	90	55	70	10	18.92	12.70			31	15	4
150	F07	90	55	70	10	18.92	12.70			31	15	4
200	F10	125	70	102	12	22.10	15.88			40	15	4
250	F10	125	70	102	12	28.45	20.62			40	18	4
300	F10	125	70	102	12	31.6		6.35	34.25	40	20	4
350	F10	125	70	102	12	31.6		7.90	35.05	45	20	4
400	F14	175	100	140	18	33.15		7.90	36.60	45-52	21	5
450	F14	175	100	140	18	38.00		9.50	41.45	53	26	5
500	F16	210	130	165	22	41.15		9.50	44.60	59	21	5
600	F16	210	130	165	22	53.98		12.70	54.75	71	25	6
700	F25	300	200	254	18	63.35		18.00	71.35	82	36	7
800	F25	300	200	254	18	63.35		18.00	71.35	80	34	8
900	F30	350	230	298	22	75.00		20.00	84.00			6
1000	F30	350	230	298	22	85.00		22.00	95.00	140	34	6
1200	F35	415	260	356	33	105.00		28.00	117.0	150	37-40	6